



Government of India
Ministry of Earth Sciences
India Meteorological Department



Press Release
Date: 30th January 2026
Time of Issue: 1330 hours

Subject: (i) Under the influence of two Western Disturbance in quick succession, light to moderate scattered/ fairly widespread rainfall/snowfall likely over Western Himalayan region and light to moderate isolated/scattered rainfall over adjoining plains of northwest India and Central India during 31st January to 3rd February. Thereafter, a third western disturbance is likely to affect Northwestern India during 05th-07th February, 2026.

(ii) Dense fog conditions likely during morning hours in isolated pockets over northwest & adjoining central India till 1st February, 2026.

Realised weather during past 24 hours ending at 0830 hours IST of today, the 30th January, 2026:

- ❖ **Dense to very Dense fog (visibility <50 m) conditions** prevailed at a few places over West Uttar Pradesh; in isolated pockets of Uttarakhand, and **dense fog (visibility 50-199 m) conditions** in isolated pockets over Sub-Himalayan West Bengal & Sikkim, Odisha, Himachal Pradesh, Haryana, East Uttar Pradesh, East Rajasthan, East Madhya Pradesh, Chhattisgarh.
- ❖ **Visibility Reported (In Meters ≤200 m): Uttarakhand:** Khatima(<50 m), Pantnagar(>50 m); **West Uttar Pradesh:** Bareilly Iaf, Sarsawa(Iaf) & Agra Iaf-00 m Each, Bareilly-20 m, **Sub-Himalayan West Bengal & Sikkim:** Jalpaiguri (50 m) , Bagdogra(100 m); **Odisha:** Chhatrapur (50 m) , Paradip (50-199 m); **Himachal Pradesh:** Una (50 m), Sundernagar(100 m); **Agra Taj & Aligarh-30 m Each, Ams Aligarh & Najibabad-50 m Each, Etawah-100 m; East Uttar Pradesh:** Bahraich-80 m; **East Madhya Pradesh:** Satna (50 m); **Chhattisgarh:** Ambikapur 50; **East Rajasthan:** Kota 50; **Haryana:** Ambala (150 m), Karnal (60 m).

Temperature Conditions during past 24 hours till 0830 hours IST of today:

- ❖ **Minimum temperatures** were 0-4°C over Himachal Pradesh, Uttarakhand; 5-9°C over West Uttar Pradesh, Punjab, Haryana Chandigarh & Delhi, Rajasthan, Madhya Pradesh, north Chhattisgarh, Jharkhand, Sikkim, Meghalaya, Mizoram, Manipur. It is 10°C and above for remaining parts of the country, except higher reaches of Jammu-Kashmir-Ladakh-Gilgit-Baltistan-Muzaffarabad where it was less than 0°C.
- ❖ **Minimum Temperature Departures** were above normal by (3°C to 5°C) over Punjab, East Uttar Pradesh, Odisha, Gujarat State; by (1°C to 3°C) over Western Himalayan Region, West Uttar Pradesh, Jharkhand, Gangetic West Bengal, Northeast India, Madhya Maharashtra and South Peninsular India and near normal over rest parts of the country. (refer to ANNEXURE IV)
- ❖ The **lowest minimum temperature** of 3.0°C was observed at **Rajgarh (West Madhya Pradesh)** over the plains of India.

Weather Systems, Forecast and Warnings (refer to ANNEXURE I & II):

- ❖ The **western disturbance as a cyclonic circulation** over northeast Iran in middle tropospheric levels persists.
- ❖ **Subtropical westerly Jet Stream** with core winds of the order of 110 knots at 12.6 km above mean sea level prevails over northwest India.
- ❖ An **upper air cyclonic circulation** over lay over south Kerala coast & neighbourhood in lower tropospheric level.
- ❖ An **upper air cyclonic circulation** lies over Comorin area & neighbourhood in lower tropospheric level.
- ❖ 2nd **western disturbance** is likely to affect northwest India from the night of 02nd February 2026 and 3rd from 05th February 2026.

Under the influence of above system, the following weather is likely:

- ❖ Scattered to fairly widespread rainfall/snowfall with **thunderstorm, lightning & gusty winds speed reaching (30-40 gusting to 50 kmph)** likely over Jammu-Kashmir-Ladakh-Gilgit-Baltistan-Muzaffarabad during 31st January-02nd February, Himachal Pradesh, Punjab, Haryana, Chandigarh on 01st February, Uttarakhand during 01st-03rd, West Uttar Pradesh on 01st & 02nd; Rajasthan on 31st January-01st February.
- ❖ **Isolated** light rainfall with **thunderstorm, lightning** likely over Arunachal Pradesh on 30th January, East Uttar Pradesh on 02nd; East Madhya Pradesh on 02nd & 03rd February.
- ❖ **Isolated Hailstorm activity also likely** over West Rajasthan on 31st January and over East Rajasthan on 31st January & 01st February, 2026.

Forecast of minimum temperatures:

- ❖ No significant change likely over Northwest India during next 24 hours; gradual rise by 3-5°C during subsequent 3 days and gradual fall by 2-4°C during subsequent 3 days thereafter.
- ❖ Gradual rise in minimum temperatures by 2-3°C likely over Central India and Maharashtra during next 48 hours and no significant change thereafter.
- ❖ Rise in minimum temperatures by 2-3°C likely over Gujarat during next 24 hours; gradual fall by 3-5°C during subsequent 3 days and rise by 2-3°C during subsequent 3 days thereafter.
- ❖ No significant change in minimum temperatures likely over rest parts of the country.

Dense Fog, Cold day Warnings:

- ❖ **Dense to very dense fog** conditions likely during morning/night hours in some/isolated pockets over Uttar Pradesh till 31st morning and **dense fog conditions** isolated places over East Uttar Pradesh till 01st February.
- ❖ **Dense fog conditions** likely over isolated places over Himachal Pradesh, Uttarakhand, Punjab, Haryana Chandigarh, East Rajasthan, Assam & Meghalaya, Chhattisgarh till 31st January, north Madhya Pradesh, Sub-Himalayan West Bengal & Sikkim, Bihar, Odisha till 01st February.
- ❖ **Cold day** conditions likely in isolated pockets over Madhya Pradesh on 30th January.

Fisherman Warning:

Fishermen are advised not to venture into the following areas during 30th January to 04th February, 2026:

- **Bay of Bengal:** Along and off south Tamil Nadu and west Sri Lanka coasts, Over Gulf of Mannar, Comorin area on 30th January.
- **Arabian Sea:** Along and off Somalia coast and over few parts of southwest Arabian sea during 30th January to 01st February and on 03rd February.

Weather conditions and forecast over Delhi/NCR during 30th January-02nd February, 2026 (ANNEXURE III)

For more details, kindly refer National Weather Bulletin:

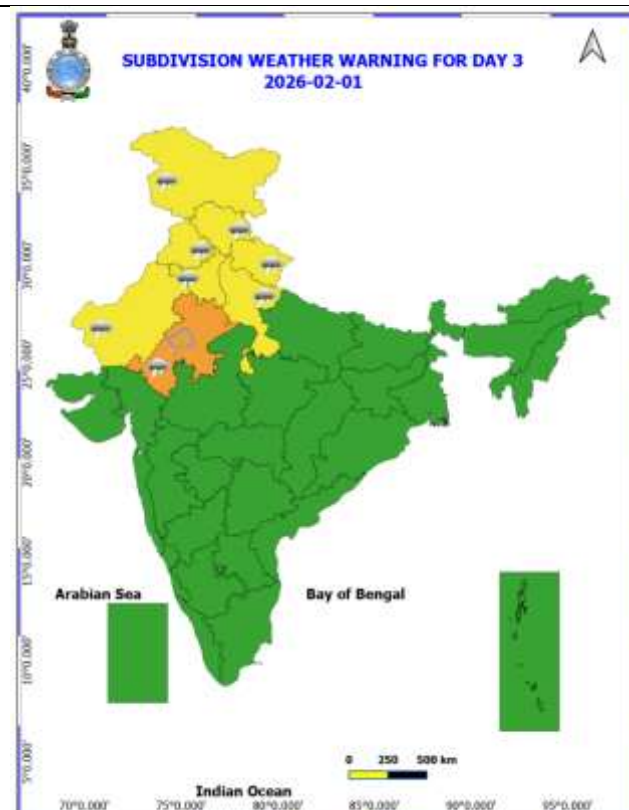
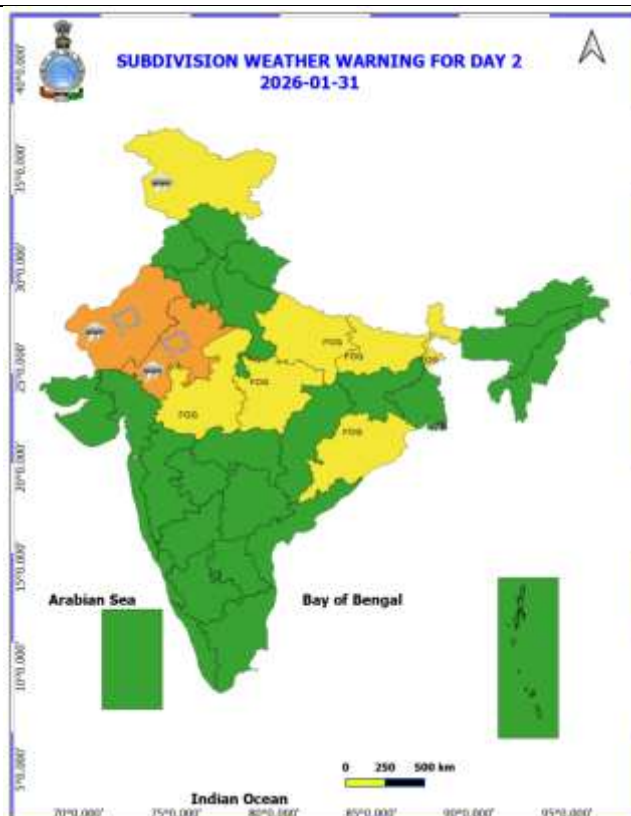
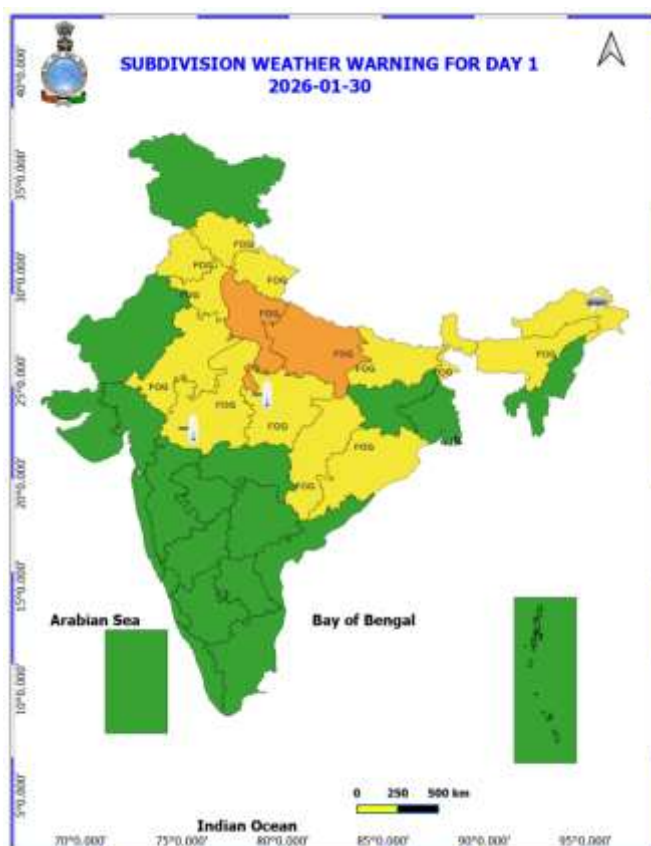
https://mausam.imd.gov.in/responsive/all_india_forecast_bulletin.php

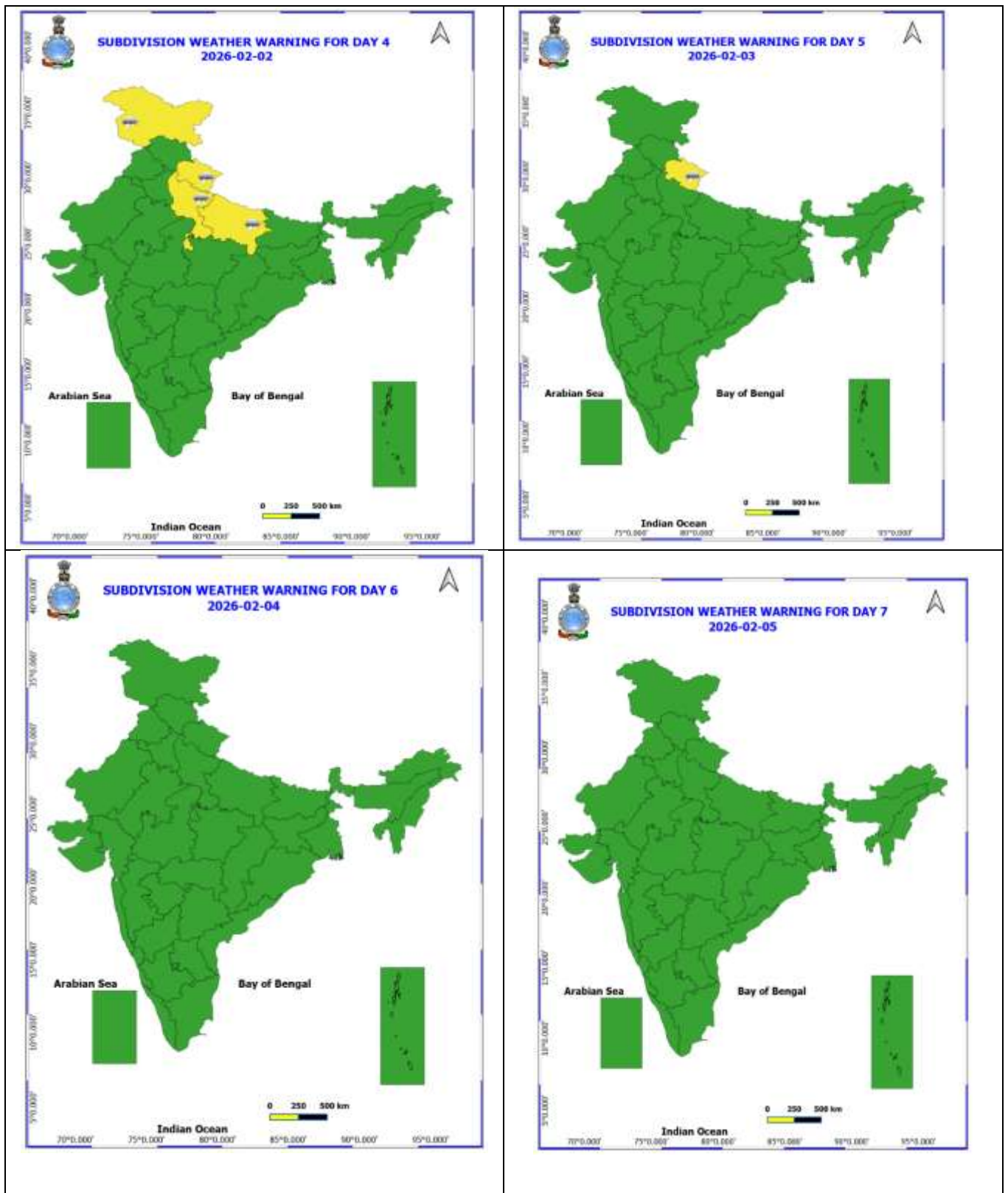
For District wise warnings refer: <https://mausam.imd.gov.in/responsive/districtWiseWarningGIS.php>

For Fishermen warning refer <https://rsmcnewdelhi.imd.gov.in/fishermen-warning.php>

Table-1								
7 Days Rainfall Forecast								
S.No.	Subdivision	30- Jan	31- Jan	1- Feb	2- Feb	3- Feb	4- Feb	5- Feb
		Day 1	Day 2	Day 3	Day 4	Day 5	Day 6	Day 7
1	ANDAMAN & NICOBAR ISLANDS	SCT	ISOL	DRY	DRY	DRY	ISOL	SCT
2	ARUNACHAL PRADESH	ISOL	DRY	DRY	ISOL	ISOL	ISOL	DRY
3	ASSAM & MEHGHALAYA	ISOL	DRY	DRY	DRY	DRY	DRY	DRY
4	NAGALAND, MANIPUR, MIZORAM AND TRIPURA	ISOL	DRY	DRY	DRY	DRY	DRY	DRY
5	SUB HIMALAYAN WEST BENGAL & SIKKIM	DRY	DRY	DRY	ISOL	ISOL	DRY	DRY
6	GANGETIC WEST BENGAL	DRY	DRY	DRY	DRY	DRY	DRY	DRY
7	ODISHA	DRY	DRY	DRY	DRY	DRY	DRY	DRY
8	JHARKHAND	DRY	DRY	DRY	DRY	ISOL	DRY	DRY
9	BIHAR	DRY	DRY	DRY	DRY	ISOL	DRY	DRY
10	EAST UTTAR PRADESH	DRY	DRY	ISOL	SCT	ISOL	DRY	DRY
11	WEST UTTAR PRADESH	DRY	DRY	SCT	SCT	ISOL	DRY	DRY
12	UTTARAKHAND	ISOL	ISOL	SCT	SCT	SCT	ISOL	DRY
13	HARYANA, CHANDIGARH & DELHI	DRY	ISOL	FWS	ISOL	DRY	DRY	DRY
14	PUNJAB	DRY	ISOL	SCT	ISOL	DRY	DRY	DRY
15	HIMACHAL PRADESH	ISOL	SCT	FWS	SCT	SCT	DRY	DRY
16	JAMMU AND KASHMIR AND LADAKH	ISOL	SCT	FWS	DRY	SCT	DRY	DRY
17	WEST RAJASTHAN	DRY	ISOL	ISOL	DRY	DRY	DRY	DRY
18	EAST RAJASTHAN	DRY	ISOL	ISOL	ISOL	ISOL	DRY	DRY
19	WEST MADHYA PRADESH	DRY	DRY	ISOL	ISOL	ISOL	DRY	DRY
20	EAST MADHYA PRADESH	DRY	DRY	DRY	ISOL	ISOL	DRY	DRY
21	GUJRAT REGION	DRY	DRY	DRY	DRY	DRY	DRY	DRY
22	SAURASHTRA & KUTCH	DRY	DRY	DRY	DRY	DRY	DRY	DRY
23	KONKAN & GOA	ISOL	DRY	DRY	DRY	DRY	DRY	DRY
24	MADHYA MAHARASHTRA	ISOL	DRY	DRY	ISOL	ISOL	DRY	DRY
25	MARATHWADA	DRY	DRY	DRY	DRY	ISOL	DRY	DRY
26	VIDARBHA	DRY	DRY	DRY	ISOL	DRY	DRY	DRY
27	CHHATTISGARH	DRY	DRY	DRY	ISOL	ISOL	DRY	DRY
28	COASTAL ANDHRA PRADESH	DRY	DRY	DRY	DRY	DRY	DRY	DRY
29	TELANGANA	DRY	DRY	DRY	DRY	DRY	DRY	DRY
30	RAYALASEEMA	DRY	DRY	DRY	DRY	DRY	DRY	DRY
31	TAMILNADU & PUDUCHERRY	DRY	DRY	ISOL	ISOL	ISOL	DRY	DRY
32	COSTAL KARNATAKA	DRY	DRY	DRY	DRY	DRY	DRY	DRY
33	NORTH INTERIOR KARNATAKA	DRY	DRY	DRY	DRY	DRY	DRY	DRY
34	SOUTH INTERIOR KARNATAKA	DRY	DRY	DRY	DRY	DRY	DRY	DRY
35	KERALA AND MAHE	ISOL	DRY	ISOL	ISOL	ISOL	DRY	DRY
36	LAKSHADWEEP	DRY	DRY	DRY	DRY	SCT	DRY	DRY

- As the lead period increases forecast accuracy decrease.





- Action may be taken based on ORANGE AND REDCOLOUR warnings.
- Vulnerable regions likely urban and hilly areas action may be initiated for heavy rainfall warning.
- As the lead period increases forecast accuracy decreases.

Detailed districtwise Multi Hazard weather warning for next five days available at <https://mausam.imd.gov.in/responsive/districtWiseWarningGIS.php>

Weather forecast over Delhi/NCR during 30th January to 02nd February 2026**Past Weather:**

There has been appreciable fall in the minimum temperature up to 2 - 4°C and no large change in the maximum temperature during the past 24 hours over Delhi. The maximum temperatures over Delhi were around 15°C to 18°C and the minimum temperatures are around 07°C - 09°C respectively. The minimum temperatures are below normal (-1.6°C to -3.0°C) at isolated places and normal (-1.5°C to 1.5°C) over remaining parts of Delhi. The maximum temperatures are markedly below normal (-5.1°C or less) at isolated places and appreciably below normal (-3.1°C to -5.0°C) over remaining parts of Delhi. Safdarjung Airport reported visibility of 100m from 0230 IST to 0400 IST, which thereafter improved to 500m from 0430 IST of today, 30-01-2026. Palam Airport reported visibility of 600m at 0730 IST, which thereafter improved to 700m from 0800 IST of today, 30-01-2026. Partly cloudy sky conditions with predominant surface wind from the west directions with a wind speed up to 14 kmph prevailed during the past 24 hours. Partly cloudy sky conditions. The winds speed reaching up to 10 kmph from the west direction to be prevailed over the region in the forenoon today.

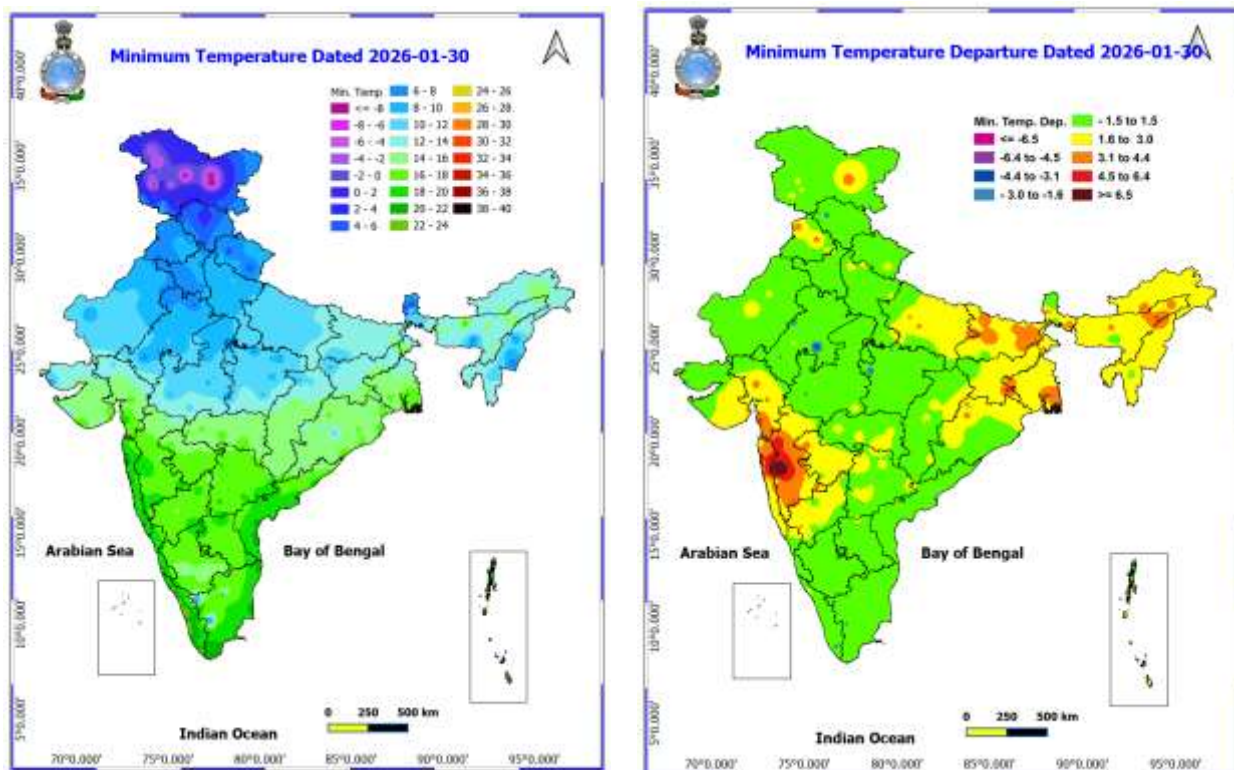
Weather Forecast:

30.01.2026: Partly cloudy sky. Mist during night. The maximum temperatures are likely to be in the range of 21°C to 23°C. The maximum temperatures will near normal over Delhi. The predominant surface wind is likely to be from the northwest direction reaching up to 10 kmph during the afternoon hours. The wind speed will decrease becoming less than 06 kmph from the north direction during evening and night.

31.01.2026: Partly cloudy sky likely to become generally cloudy sky towards afternoon/evening. Moderate fog at many places with dense fog at isolated places during morning hours. Possibility of a spell of very light rain accompanied with thunderstorm/lightning and gusty winds speed reaching 30-40 kmph towards night. The maximum and minimum temperatures over Delhi are likely to be in the range of 20°C to 22°C and 06°C to 08°C respectively. The minimum temperatures will below normal (-1.6°C to -3.0°C) and the maximum temperatures will below normal (-1.6°C to -3.0°C) over Delhi. The predominant surface wind is likely to be from the north direction with wind speed associated with calm wind reaching up to 05 kmph during the morning hours. The wind speed will increase becoming up to 08 kmph from the northeast direction in the afternoon. The wind speed will increase becoming up to 10 kmph from the northeast direction during evening and night.

01.01.2026: Generally cloudy sky. One or two spells of very light to light rain accompanied with thunderstorm/lightning with gusty winds (speed 30-40 kmph) during early morning to forenoon. Another spell of very light to light rain accompanied with thunderstorm/lightning with gusty winds (speed 30-40 kmph) during afternoon to evening. The maximum and minimum temperatures over Delhi are likely to be in the range of 17°C to 19°C and 11°C to 13°C respectively. The minimum temperature will appreciable above normal (3.1°C to 5.0°C) and the maximum temperatures will appreciable below normal (-3.1°C to -5.0°C) over Delhi. The predominant surface wind is likely to be from the southeast direction with wind speed reaching upto 10 kmph during morning hours. The wind speed will increase becoming up to 12 kmph from east direction during the afternoon. The wind speed will decrease becoming up to 08 kmph from the east direction during evening and night.

02.01.2026: Generally cloudy sky. One or two spells of very light rain accompanied with thunderstorm/lightning with gusty winds (speed 30-40 kmph) during evening/night. Shallow to moderate fog during morning hours. The maximum and minimum temperatures over Delhi are likely to be in the ranges of 17°C to 19°C and 11°C to 13°C respectively. The predominant surface wind is likely to be from the north direction with wind speed up to 10 kmph during the morning hours. The wind speed will increase becoming upto 12 kmph from northeast direction in the afternoon. The wind speed will decrease becoming up to 08 kmph from the north direction during evening and night.



Reported minimum temperature over the plains ($\leq 8^{\circ}\text{C}$) at 0830 hrs IST of the 30th January 2026.

Station	State	Temperature
Rajgarh	Madhya Pradesh	3.0
Palam	Delhi	6.7
Hissar	Haryana	7.2
Khajuraho	Madhya Pradesh	7.4
Ayanagar	Delhi	7.6
Damoh	Madhya Pradesh	7.6
Safdarjung	Delhi	7.7
Karnal	Haryana	7.7
Rewa	Madhya Pradesh	7.8
Raisen	Madhya Pradesh	8.0

Impact expected and action suggested due to isolated thunderstorm with lightning/ gusty winds and hailstorm over

- ❖ Scattered to fairly widespread rainfall/snowfall with **thunderstorm, lightning & gusty winds speed reaching (30-40 gusting to 50 kmph)** likely over Jammu-Kashmir-Ladakh-Gilgit-Baltistan-Muzaffarabad during 31st January-02nd February, Himachal Pradesh, Punjab, Haryana, Chandigarh on 01st February, Uttarakhand during 01st-03rd, West Uttar Pradesh on 01st & 02nd; Rajasthan on 31st January-01st February.
- ❖ **Isolated** light rainfall with **thunderstorm, lightning** likely over Arunachal Pradesh on 30th January, East Uttar Pradesh on 02nd; East Madhya Pradesh on 02nd & 03rd February.
- ❖ **Isolated Hailstorm activity also likely** over West Rajasthan on 31st January and over East Rajasthan on 31st January & 01st February, 2026.

Impact expected:

- Breaking of tree branches, uprooting of large avenue trees. Large dead limbs blown from trees. Damage to Standing crops.

- Minor to Major damage to banana and papaya trees.
- Minor to major damage to power and communication lines due to breaking of branches.
- Strong wind/hail may damage plantation, horticulture and standing crops.
- Hail may injure people and cattle at open places.
- Partial damage to vulnerable structures due to strong winds.
- Minor damage to kutcha houses/walls and huts.
- Loose objects may fly.

Action suggested:

- People are advised to keep a watch on the weather for worsening conditions and be ready to move to safer places accordingly.
- Stay indoors, close windows & doors and avoid travel if possible.
- Take safe shelters; do not take shelter under trees.
- Do not lie on concrete floors and do not lean against concrete walls.
- Unplug electrical/ electronic appliances.
- Immediately get out of water bodies.
- Keep away from all the objects that conduct electricity.

Impact expected due to dense fog in the morning/night hours:

- ❖ **Dense to very dense fog** conditions likely during morning/night hours in some/isolated pockets over Uttar Pradesh till 31st morning and **dense fog conditions** isolated places over East Uttar Pradesh till 01st February.
- ❖ **Dense fog conditions** likely over isolated places over Himachal Pradesh, Uttarakhand, Punjab, Haryana Chandigarh, East Rajasthan, Assam & Meghalaya, Chhattisgarh till 31st January, north Madhya Pradesh, Sub-Himalayan West Bengal & Sikkim, Bihar, Odisha till 01st February.

❖ **Transport and Aviation:**

- May affect some airports, highways and railway routes in the areas of met- sub-division.
- Difficult driving conditions with slower journey times.
- Unless taken precautionary measures, it may lead to some road traffic collisions.

❖ **Power Sector:**

- Chances of Tripping of Power lines in the very dense fog routes.

❖ **Human Health:**

- Lung related health impacts: Dense fog contains particulate matter and other pollutants and in case exposed it gets lodged in the lungs, clogging them and decreasing their functional capacity which increases episodes of wheezing, coughing and shortness of breath.
- Impact on people having asthma bronchitis: Long time exposure to dense fog may cause respiratory problem for people having asthma bronchitis and other lung related health problems.
- Eye Irritation: Dense fog contains pollutions of various types and these Pollutants in the air if exposed may tend to irritate the membranes of the eye causing various infections leading to redness or swelling of the eye.

Impact expected due to Cold Wave/ Severe Cold wave conditions:

Cold day conditions likely in isolated pockets over Madhya Pradesh on 30th January.

- ❖ An increased likelihood of various illnesses like flu, running/ stuffy nose or nosebleed, which usually set in or get aggravated due to prolonged exposure to cold.
- ❖ Do not ignore shivering. It is the first sign that the body is losing heat. Get Indoors.
- ❖ Frostbite can occur due to prolonged exposure to cold. The skin turns pale, hard and numb and eventually black blisters appear on exposed body parts such as fingers, toes, nose and or earlobes. Severe frostbite needs immediate medical attention and treatment.
- ❖ Impact on agriculture, crop, livestock, water supply, transport and power sector at some places.

Action suggested:

- ❖ Wear several layers of loose fitting, light weight; warm woollen clothing.
- ❖ Cover your head, neck, hands and toes adequately as majority of heat loss occurs through these body parts. Wear several layers of loose fitting, light weight; warm woollen clothing rather than one layer of heavy cloth.
- ❖ Eat vitamin-C rich fruits & vegetable and drink sufficient fluids preferably warm fluids to maintain adequate immunity.
- ❖ Avoid or limit outdoor activities.

- ❖ Keep dry, if wet, change cloths immediately to prevent loss of body heat. Wear insulated/waterproof shoes.
- ❖ Warm the affected area of the body slowly with lukewarm water; do not rub the skin vigorously.
- ❖ If the affected skin area turns black, immediately consult a doctor.
- ❖ Maintain ventilation while using Heaters to avoid inhaling toxic fumes.
- ❖ Take safety measures while using electrical and gas heating devices.
- ❖ Extreme care needed for vulnerable people.
- ❖ Seek medical attention as soon as possible for someone suffering from frostbite/ Hypothermia.
- ❖ Protect livestock from cold weather.

Agromet advisories for likely impact of Hailstorm

- Use hail nets to protect orchards and vegetable plants in Rajasthan.

Agromet advisories for likely impact of Thunderstorm / Gusty Winds

- Provide mechanical support to horticultural crops and staking or support to vegetables and young fruit plants / fruit-bearing plants to avoid lodging due to strong winds.

Livestock

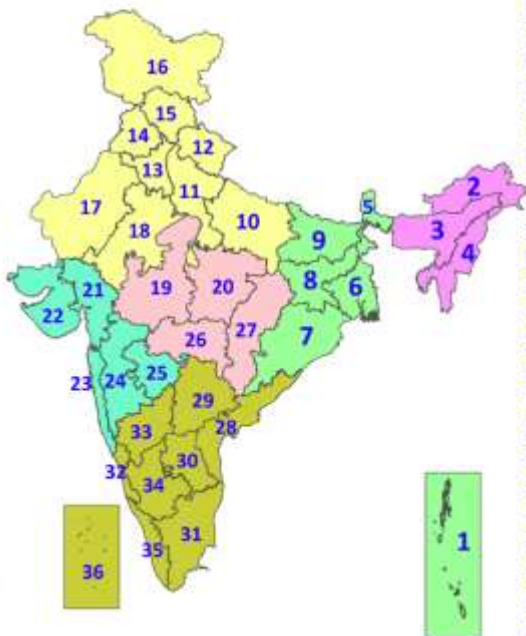
- Keep the animals inside the shed during Hailstorm period and provide them balanced feed. Store feed and fodder in a safe place to prevent spoilage.

Legends & abbreviations:

- ❖ **Heavy Rain:**64.5-115.5mm; **Very Heavy Rain:**115.6-204.4mm; **Extremely Heavy Rain:** >204.4mm.
- ❖ **Obsy:** Observatory; Automatic Weather Station; **ARG:** Automatic Rain Gauge; **dist:** District; **NH:** National Highway; **KVK:** Krishi Vigyan Kendra; **DVC:** Damodar Valley Corporation; **PTO:** Part Time Office, **Aero:** Aerodrome, **IAF:** Indian Air Force.
- ❖ **Region wise classification of meteorological Sub-Divisions:**
 - **Northwest India:** Western Himalayan Region (Jammu-Kashmir-Ladakh-Gilgit-Baltistan-Muzaffarabad, Himachal Pradesh and Uttarakhand); Punjab, Haryana-Chandigarh-Delhi; West Uttar Pradesh, East Uttar Pradesh, West Rajasthan and East Rajasthan.
 - **Central India:** West Madhya Pradesh, East Madhya Pradesh, Vidarbha and Chhattisgarh.
 - **East India:** Bihar, Jharkhand, Sub-Himalayan West Bengal & Sikkim; Gangetic West Bengal, Odisha and Andaman & Nicobar Islands.
 - **Northeast India:** Arunachal Pradesh, Assam & Meghalaya and Nagaland, Manipur, Mizoram & Tripura.
 - **West India:** Gujarat Region, Saurashtra & Kutch, Konkan & Goa, Madhya Maharashtra and Marathawada.
 - **South India:** Coastal Andhra Pradesh & Yanam, Telangana, Rayalaseema, Coastal Karnataka, North Interior Karnataka, South Interior Karnataka, Kerala & Mahe, Tamil Nadu, Puducherry & Karaikal and Lakshadweep.

LEGENDS

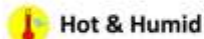
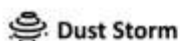
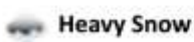
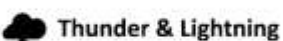
1. अंडमान और निकोबार द्वीपसमूह
2. अरुणाचल प्रदेश
3. असम और मेघालय
4. नागालैंड, मणिपुर, मिजोरम और त्रिपुरा
5. उप-हिमालयी पश्चिम बंगाल और सिक्किम
6. गंगीय पश्चिम बंगाल
7. ओडिशा
8. झारखंड
9. बिहार
10. पूर्वी उत्तर प्रदेश
11. पश्चिम उत्तर प्रदेश
12. उत्तराखंड
13. हरियाणा, चंडीगढ़ और दिल्ली
14. पंजाब
15. हिमाचल प्रदेश
16. जम्मू और कश्मीर और लद्दाख
17. पश्चिम राजस्थान
18. पूर्वी राजस्थान
19. पश्चिम मध्य प्रदेश
20. पूर्वी मध्य प्रदेश
21. गुजरात
22. सौराष्ट्र
23. कोंकण और गोवा
24. मध्य महाराष्ट्र
25. मराठवाड़ा
26. विदर्भ
27. छत्तीसगढ़
28. तटीय आंध्र प्रदेश और यनम
29. तेलंगाना
30. रायलसीमा
31. तमिलनाडु, पुडुचेरी और कराईकल
32. तटीय कर्नाटक
33. आंतरिक उत्तरी कर्नाटक
34. आंतरिक दक्षिणी कर्नाटक
35. केरल और माहे
36. लक्षद्वीप



1. Andaman & Nicobar Islands
2. Arunachal Pradesh
3. Assam & Meghalaya
4. Nagaland, Manipur, Mizoram & Tripura
5. Sub-Himalayan West Bengal & Sikkim
6. Gangetic West Bengal
7. Odisha
8. Jharkhand
9. Bihar
10. East Uttar Pradesh
11. West Uttar Pradesh
12. Uttarakhand
13. Haryana, Chandigarh & Delhi
14. Punjab
15. Himachal Pradesh
16. Jammu & Kashmir and Ladakh
17. West Rajasthan
18. East Rajasthan
19. West Madhya Pradesh
20. East Madhya Pradesh
21. Gujarat
22. Saurashtra
23. Konkan & Goa
24. Madhya Maharashtra
25. Marathwada
26. Vidarbha
27. Chhattisgarh
28. Coastal Andhra Pradesh & Yanam
29. Telangana
30. Rayalaseema
31. Tamilnadu, Puducherry & Karaikal
32. Coastal Karnataka
33. North Interior Karnataka
34. South Interior Karnataka
35. Kerala & Mahe
36. Lakshadweep

SPATIAL DISTRIBUTION (% of Stations reporting)

% Stations	Category	% Stations	Category
76-100	Widespread (WS/Most Places)	26-50	Scattered (SCT/A Few Places)
51-75	Fairly Widespread (FWS/Many Places)	1-25	Isolated (ISOL)



COLOUR CODED WARNING

No Warning (No Action)
Watch (Be Aware)
Alert (Be Prepared To Take Action)
Warning (Take Action)

Probabilistic Forecast

Terms	Probability of Occurrence (%)
Unlikely	< 25
Likely	25 - 50
Very Likely	50 - 75
Most Likely	> 75

DEFINITION/CRITERIA

Rain/ Snow *

Heavy: 64.5 to 115.5 mm/cm *
Very Heavy: 115.6 to 204.4 mm/cm *
Extremely Heavy: > 204.4 mm/cm *

Heat Wave

When maximum temperature of a station reaches $\geq 40^{\circ}\text{C}$ for plains and $\geq 30^{\circ}\text{C}$ for hilly regions
(a) Based on Departure from normal

Heat Wave: Maximum Temperature Departure from normal 4.5°C to 6.4°C .

Severe Heat Wave: Maximum Temperature Departure from normal $\geq 6.5^{\circ}\text{C}$

(b). Based on Actual maximum temperature

Heat Wave: When actual maximum temperature $\geq 45^{\circ}\text{C}$.

Severe Heat Wave: When actual maximum temperature $\geq 47^{\circ}\text{C}$.

(c). Criteria for heat wave for coastal stations

When maximum temperature departure is $> 4.5^{\circ}\text{C}$ from normal. Heat Wave may be described provided maximum temperature $\geq 37^{\circ}\text{C}$.

Warm Night

When maximum temperature remains 40°C

Warm Night: When minimum temperature departure 4.5°C to 6.4°C .

Severe Warm Night: When minimum temperature departure $> 6.4^{\circ}\text{C}$.

Cold Wave

When minimum temperature of a station $\leq 10^{\circ}\text{C}$ for plains and $\leq 0^{\circ}\text{C}$ for hilly regions.

(a). Based on departure

Cold Wave: Minimum Temperature Departure from normal -4.5°C to -6.4°C .

Severe Cold Wave: Minimum Temperature Departure from normal $\leq -6.5^{\circ}\text{C}$

(b) Based on actual Minimum Temperature (for Plains only)

Cold Wave: When Minimum Temperature is $\leq 4.0^{\circ}\text{C}$

Severe Cold Wave: When Minimum Temperature is $\leq 2.0^{\circ}\text{C}$

(c) For Coastal Stations

When Minimum Temperature departure is $\leq -4.5^{\circ}\text{C}$ & actual Minimum Temperature is $\leq 15^{\circ}\text{C}$

Cold Day

When minimum temperature of a station $\leq 10^{\circ}\text{C}$ for plains and $\leq 0^{\circ}\text{C}$ for hilly regions

Based on departure

Cold Day: Maximum Temperature Departure from normal -4.5°C to -6.4°C .

Severe Cold Day: Maximum Temperature Departure from normal $\leq -6.5^{\circ}\text{C}$

Fog

Phenomenon of small droplets suspended in air and the horizontal visibility $< 1\text{km}$

Moderate Fog: When the visibility between 500-200 metres

Dense Fog: when the visibility between 50- 200 metres

Very Dense Fog: when the visibility < 50 metres

Thunderstorm

Sudden electrical discharges manifested by a flash of light (Lightning) and a sharp rumbling sound (thunder)

Dust/Sand Storm

An ensemble of particles of dust or sand energetically lifted to great heights by a strong and turbulent wind.

Frost

Ice deposits on ground

Air temperature $\leq 4^{\circ}\text{C}$ (over Plains)

Squall

A strong wind that rises suddenly, lasts for atleast 1 minute.

Moderate: Wind speed 52-61 kmph

Severe: Wind speed 62-67 kmph

Very Severe: Wind speed > 67 kmph

Sea State

Effect of various waves in the sea over specific area

Rough to very rough: Wind speed 41-62 kmph (22-33 knots) & Wave height 2.5-6 metre

High to very high: Wind speed 63-117 kmph (34-63 knots) & Wave height 6-14 metre

Phenomenal: Wind speed > 117 kmph (> 63 knots) & Wave height > 14 metre

Cyclone

Cyclonic Storm: Wind speed 62-87 kmph (34-47 knots)

Severe Cyclonic Storm: Wind speed 88-117 kmph (48-63 knots)

Very Severe Cyclonic Storm: Wind speed 118-165 kmph (64 - 89 knots)

Extremely Severe Cyclonic Storm: Wind speed 166-220 kmph (90 -119 knots)

Super Cyclone Storm: Wind speed > 220 kmph (> 119 knots)

* Red colour warning does not mean "Red Alert", Red colour warning means "Take Action".

Forecast and Warning for any day is valid from 0830 hours IST of day till 0830 hours IST of next day.

For more details, kindly visit <https://mausam.imd.gov.in> or contact: 011-2434-4599

(Service to the Nation since 1875)